



Cumulative Statistics

合計スタッツ / Statistiques cumulées

JPN - Japan

After 6 games Player Totals

No.	Name	GP	TP	Field Goals			2 Points		3 Points		Free Throws		Rebounds			AS	TO	ST	BS	PF	FD	+/-	PTS		
				M/A	%	M/A	%	M/A	%	M/A	%	OR	DR	TOT											
0	NAGAOKA Moeko	6	1:27:18	8/22	36	6/11	55	2/11	18	6/11	55	2	9	11	3	1	4		3	12	0	24			
8	TAKADA Maki (C)	6	3:01:31	33/55	60	26/42	62	7/13	54	11/13	85	4	17	21	8	7	5		12	20	13	84			
12	MIYOSHI Naho	5	39:25	5/16	31	1/2	50	4/14	29	1/2	50		3	3	1				2	1	-14	15			
13	MACHIDA Rui	6	2:33:20	16/43	37	14/35	40	2/8	25	9/10	90	3	11	14	75	15	3		4	11	29	43			
15	MOTOHASHI Nako	6	55:09	15/36	42	6/18	33	9/18	50	2/2	100	5	3	8	10	7	1		1	5	-16	41			
20	TODO Nanako	6	1:00:34	4/15	27	4/11	36	0/4	0	6/8	75		4	4	2	3	5	1	2	5	-13	14			
27	HAYASHI Saki	6	2:30:04	24/46	52	7/11	64	17/35	49	3/4	75	4	4	8	4	2	6		5	4	35	68			
30	MAWULI Evelyn	6	1:13:49	11/31	35	7/21	33	4/10	40	9/16	56	4	3	7	2	6		1	6	10	-9	35			
32	MIYAZAKI Saori	5	41:35	7/24	29	5/15	33	2/9	22	3/3	100		2	2	12	6	2		3	6	-19	19			
52	MIYAZAWA Yuki	6	2:04:40	23/54	43	4/10	40	19/44	43	4/4	100	4	21	25	9	4	8		4	3	30	69			
88	AKAHO Himawari	6	2:39:36	23/47	49	21/39	54	2/8	25	8/8	100	9	35	44	8	5	6		10	6	13	56			
99	OKOYE Monica	6	1:12:59	9/27	33	4/11	36	5/16	31	2/2	100	2	13	15	6	1	2		8	2	-9	25			
Team / Coach															16	25	41		12						
Totals				178/416	43	105/226	46	73/190	38	64/83	77	53	150	203	134	74	41	4	60	85	8	493			
Opponents				204/408	50	164/297	55	40/111	36	37/46	80	52	181	233	155	86	45	34	85	60	-8	485			

Team Totals

	JPN	Opponents
Points from Turnovers	100	77
Points in the Paint	202 (101/204) 50%	250 (125/213) 59%
Second Chance Points	51	66
Fast Break Points	71	74
Bench Points	200	150

Player Averages

No.	Name	GP	MPG	Field Goals			2 Points		3 Points		Free Throws		Rebounds			AS	TO	ST	BS	PF	FD	+/-	PPG		
				M/A	%	M/A	%	M/A	%	M/A	%	OR	DR	TOT											
0	NAGAOKA Moeko	6	14.6	1.3/3.7	36	1.0/1.8	55	0.3/1.8	18	1.0/1.8	55	0.3	1.5	1.8	0.5	0.2	0.7		0.5	2.0	0.0	4.0			
8	TAKADA Maki (C)	6	30.3	5.5/9.2	60	4.3/7.0	62	1.2/2.2	54	1.8/2.2	85	0.7	2.8	3.5	1.3	1.2	0.8		2.0	3.3	2.2	14.0			
12	MIYOSHI Naho	5	7.9	1.0/3.2	31	0.2/0.4	50	0.8/2.8	29	0.2/0.4	50		0.6	0.6	0.2				0.4	0.2	-2.8	3.0			
13	MACHIDA Rui	6	25.6	2.7/7.2	37	2.3/5.8	40	0.3/1.3	25	1.5/1.7	90	0.5	1.8	2.3	12.5	2.5	0.5		0.7	1.8	4.8	7.2			
15	MOTOHASHI Nako	6	9.2	2.5/6.0	42	1.0/3.0	33	1.5/3.0	50	0.3/0.3	100	0.8	0.5	1.3	1.7	1.2	0.2		0.2	0.8	-2.7	6.8			
20	TODO Nanako	6	10.1	0.7/2.5	27	0.7/1.8	36	0.0/0.7	0	1.0/1.3	75		0.7	0.7	0.3	0.5	0.8	0.2	0.3	0.8	-2.2	2.3			
27	HAYASHI Saki	6	25.0	4.0/7.7	52	1.2/1.8	64	2.8/5.8	49	0.5/0.7	75	0.7	0.7	1.3	0.7	0.3	1.0		0.8	0.7	5.8	11.3			
30	MAWULI Evelyn	6	12.3	1.8/5.2	35	1.2/3.5	33	0.7/1.7	40	1.5/2.7	56	0.7	0.5	1.2	0.3	1.0		0.2	1.0	1.7	-1.5	5.8			
32	MIYAZAKI Saori	5	8.3	1.4/4.8	29	1.0/3.0	33	0.4/1.8	22	0.6/0.6	100		0.4	0.4	2.4	1.2	0.4		0.6	1.2	-3.8	3.8			
52	MIYAZAWA Yuki	6	20.8	3.8/9.0	43	0.7/1.7	40	3.2/7.3	43	0.7/0.7	100	0.7	3.5	4.2	1.5	0.7	1.3		0.7	0.5	5.0	11.5			
88	AKAHO Himawari	6	26.6	3.8/7.8	49	3.5/6.5	54	0.3/1.3	25	1.3/1.3	100	1.5	5.8	7.3	1.3	0.8	1.0		1.7	1.0	2.2	9.3			
99	OKOYE Monica	6	12.2	1.5/4.5	33	0.7/1.8	36	0.8/2.7	31	0.3/0.3	100	0.3	2.2	2.5		1.0	0.2	0.3	1.3	0.3	-1.5	4.2			
Team / Coach															2.7	4.2	6.8								
Totals				29.7/69.3	43	17.5/37.7	46	12.2/31.7	38	10.7/13.8	77	8.8	25.0	33.8	22.3	12.3	6.8	0.7	10.0	14.2	1.3	82.2			
Opponents				34.0/68.0	50	27.3/49.5	55	6.7/18.5	36	6.2/7.7	80	8.7	30.2	38.8	25.8	14.3	7.5	5.7	14.2	10.0	-1.3	80.8			

Team Averages

	JPN	Opponents
Points from Turnovers	16.7	12.8
Points in the Paint	33.7	41.7
Second Chance Points	8.5	11.0
Fast Break Points	11.8	12.3
Bench Points	33.3	25.0



Cumulative Statistics

合計スタッツ / Statistiques cumulées

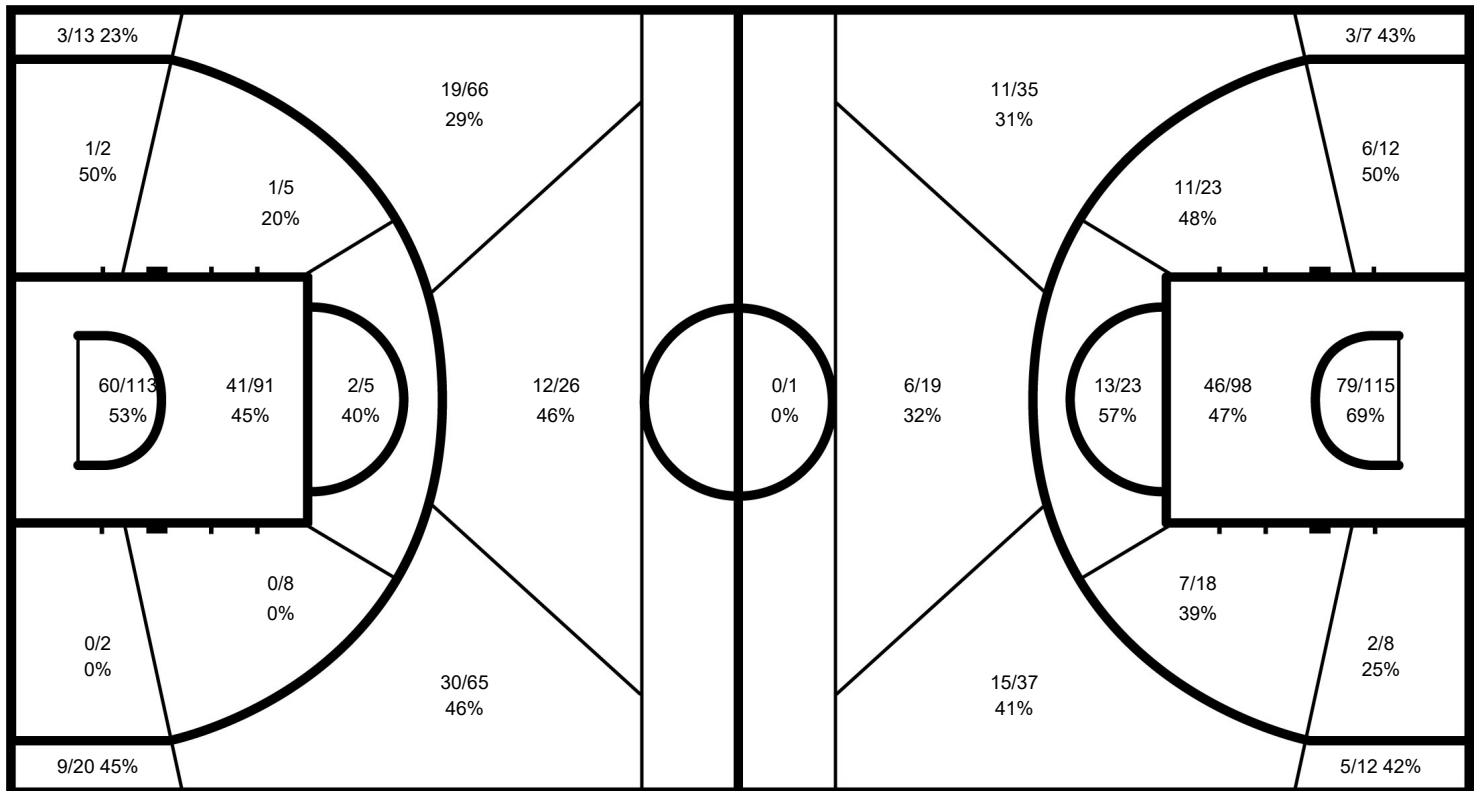
JPN - Japan

After 6 games

Phase	JPN Played	Score		Field Goals		2 Points		3 Points		Free Throws		Rebounds			AS	TO	ST	BS	PF	FD
				M / A	%	M / A	%	M / A	%	M / A	%	OR	DR	TOT						
Preliminary Round Group B	FRA	74-70	For	23/58	40	12/31	39	11/27	41	17/23	74	7	27	34	19	16	6		10	19
			Agn.	31/67	46	27/48	56	4/19	21	4/6	67	8	27	35	21	14	10	3	19	10
Preliminary Round Group B	USA	69-86	For	27/78	35	17/40	43	10/38	26	5/8	63	8	25	33	17	10	8		10	11
			Agn.	37/68	54	28/47	60	9/21	43	3/5	60	6	42	48	30	17	4	6	11	10
Preliminary Round Group B	NGR	102-83	For	38/78	49	19/39	49	19/39	49	7/9	78	12	21	33	34	14	9	3	8	12
			Agn.	37/68	54	32/57	56	5/11	45	4/5	80	10	27	37	26	20	7	8	12	8
Quarterfinal	BEL	86-85	For	30/64	47	16/31	52	14/33	42	12/15	80	10	19	29	20	7	5	1	13	15
			Agn.	33/65	51	22/42	52	11/23	48	8/9	89	12	24	36	29	9	6	4	15	13
Semifinal	FRA	87-71	For	32/61	52	21/39	54	11/22	50	12/16	75	4	32	36	28	17	9		8	15
			Agn.	29/71	41	22/47	47	7/24	29	6/6	100	8	25	33	21	14	11	1	15	8
Gold Medal Game	USA	75-90	For	28/77	36	20/46	43	8/31	26	11/12	92	12	26	38	16	10	4		11	13
			Agn.	37/69	54	33/56	59	4/13	31	12/15	80	8	36	44	28	12	7	12	13	11

JPN - Japan

Opponents



JPN

	M / A	%
Field Goals	178 / 416	43
2 Points	105 / 226	46
3 Points	73 / 190	38
Free Throws	64 / 83	77

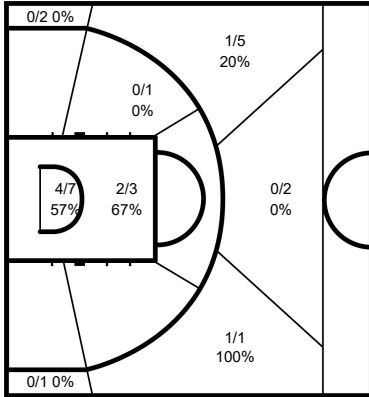
Opponents

%	M / A	
50	204 / 408	Field Goals
55	164 / 297	2 Points
36	40 / 111	3 Points
80	37 / 46	Free Throws



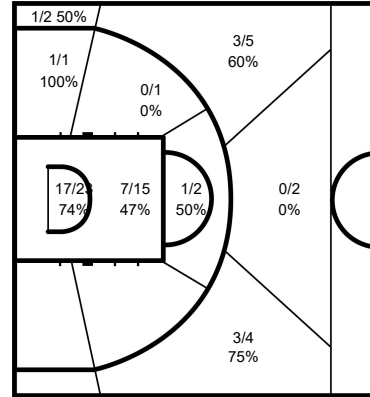
Cumulative Statistics
合計スタッツ / Statistiques cumulées
JPN - Japan
After 6 games

0 NAGAOKA Moeko



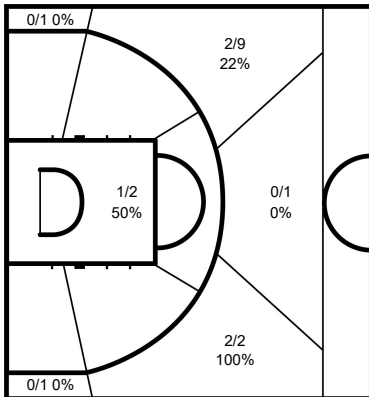
	M / A	%
Field Goals	8 / 22	36
2 Points	6 / 11	55
3 Points	2 / 11	18
Free Throws	6 / 11	55

8 TAKADA Maki



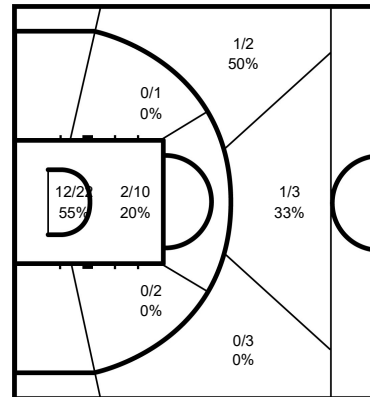
	M / A	%
Field Goals	33 / 55	60
2 Points	26 / 42	62
3 Points	7 / 13	54
Free Throws	11 / 13	85

12 MIYOSHI Naho



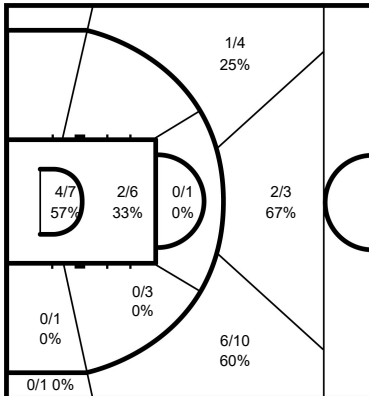
	M / A	%
Field Goals	5 / 16	31
2 Points	1 / 2	50
3 Points	4 / 14	29
Free Throws	1 / 2	50

13 MACHIDA Rui



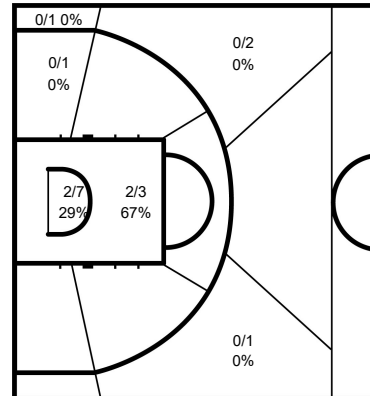
	M / A	%
Field Goals	16 / 43	37
2 Points	14 / 35	40
3 Points	2 / 8	25
Free Throws	9 / 10	90

15 MOTOHASHI Nako



	M / A	%
Field Goals	15 / 36	42
2 Points	6 / 18	33
3 Points	9 / 18	50
Free Throws	2 / 2	100

20 TODO Nanako

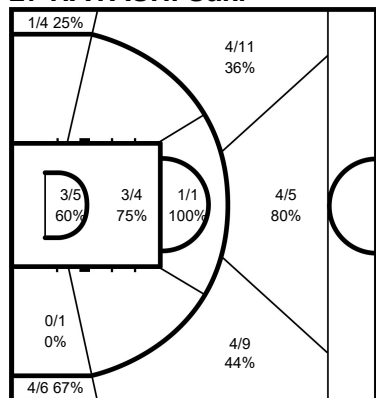


	M / A	%
Field Goals	4 / 15	27
2 Points	4 / 11	36
3 Points	0 / 4	0
Free Throws	6 / 8	75



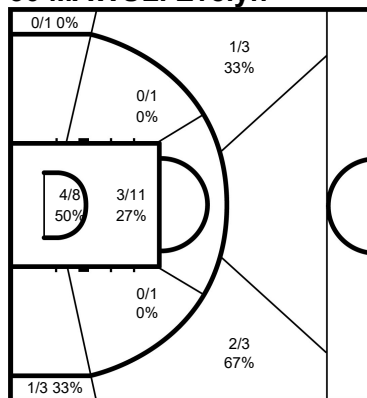
Cumulative Statistics
合計スタッツ / Statistiques cumulées
JPN - Japan
After 6 games

27 HAYASHI Saki



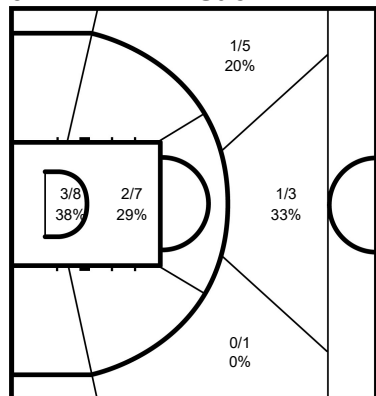
	M / A	%
Field Goals	24 / 46	52
2 Points	7 / 11	64
3 Points	17 / 35	49
Free Throws	3 / 4	75

30 MAWULI Evelyn



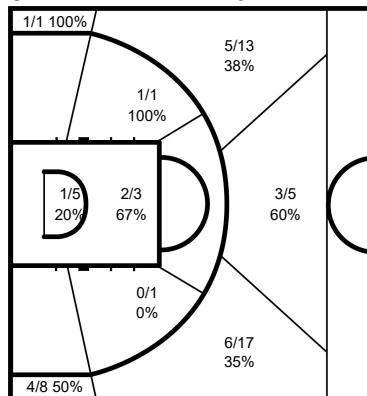
	M / A	%
Field Goals	11 / 31	35
2 Points	7 / 21	33
3 Points	4 / 10	40
Free Throws	9 / 16	56

32 MIYAZAKI Saori



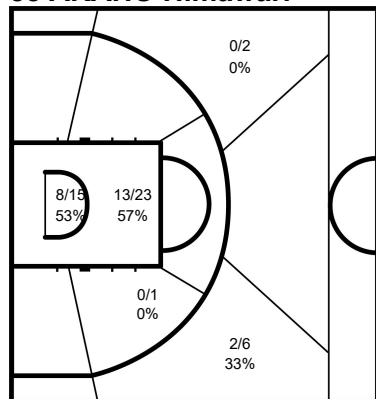
	M / A	%
Field Goals	7 / 24	29
2 Points	5 / 15	33
3 Points	2 / 9	22
Free Throws	3 / 3	100

52 MIYAZAWA Yuki



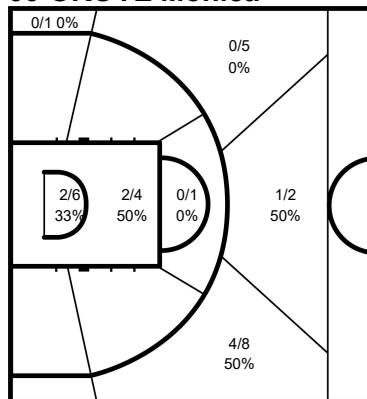
	M / A	%
Field Goals	23 / 54	43
2 Points	4 / 10	40
3 Points	19 / 44	43
Free Throws	4 / 4	100

88 AKAHO Himawari



	M / A	%
Field Goals	23 / 47	49
2 Points	21 / 39	54
3 Points	2 / 8	25
Free Throws	8 / 8	100

99 OKOYE Monica



	M / A	%
Field Goals	9 / 27	33
2 Points	4 / 11	36
3 Points	5 / 16	31
Free Throws	2 / 2	100

Legend:

%	Shooting Percentage	(C)	Captain	+/-	Plus-Minus	Agn.	Against	AS	Assists
BS	Blocked Shots	DR	Defensive Rebounds	FD	Fouls Drawn	GP	Games Played	M / A	Made / Attempts
MPG	Minutes Played per Game	No.	Uniform Number	OR	Offensive Rebounds	PF	Fouls	PPG	Points per Game
PTS	Points	ST	Steals	TO	Turnovers	TOT	Total Rebounds	TP	Time Played